

COMMERCIAL DOCUMENTATION

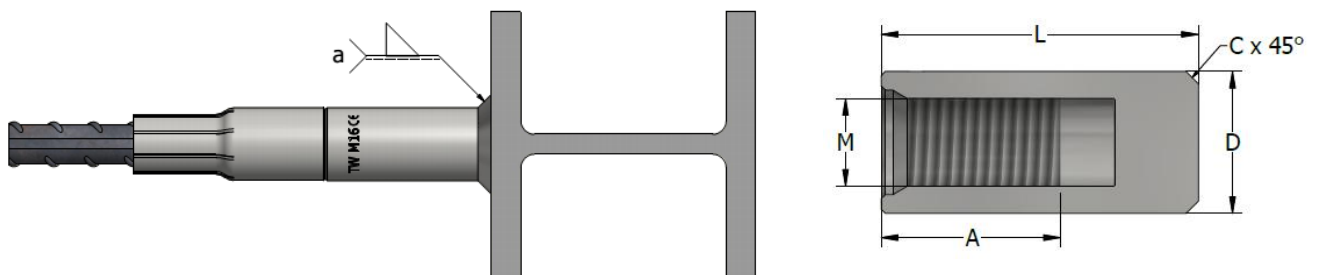
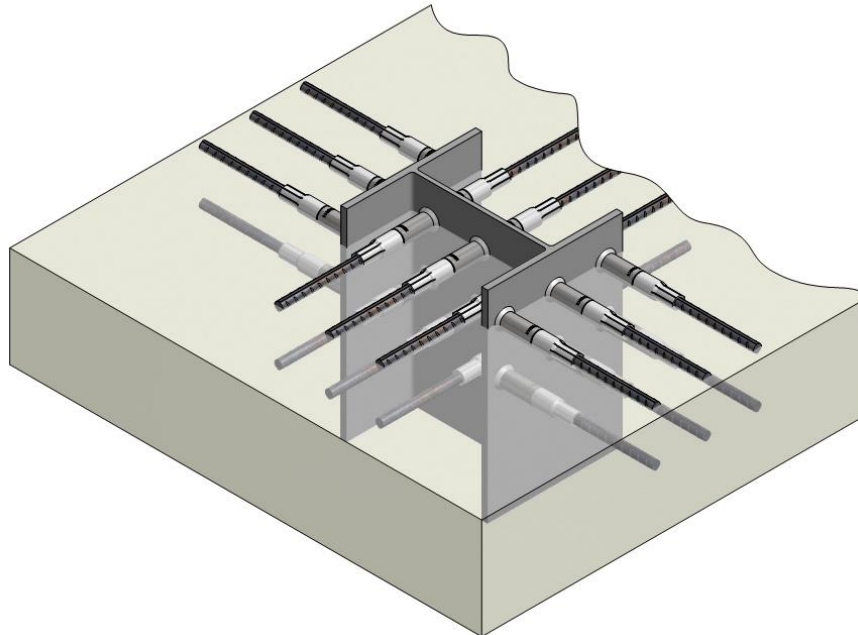


REBAR CONNECTION SYSTEM | **KB-W** **THREAD WELDABLE COUPLER**



KB-W THREAD WELDABLE COUPLER

KB-W is a KB bush used to connect reinforcing bars to structural steel plates or sections. The KB-W bush has a thread at one end. The other end is welded directly to the structural steel. The KB-W couplers are made of steel S355 or equivalent. The designer must determine the type and size of weld ("a") . Welders should be qualified for the type of weld required.



KB-W weldable coupler	Product no.	Thread	L	D	A	C	Weight
		Metric	[mm]	[mm]	[mm]	[mm]	[kg/pc]
KB-W M12	61792	M12	41	17.5	18	2	0.055
KB-W M16	61793	M16	50	22	26	2	0.100
KB-W M18	63723	M18	59	25	33	2	0.155
KB-W M20	61794	M20	65	28	39	3	0.210
KB-W M24	61795	M24	76	34	43	3	0.380
KB-W M30	61796	M30	88	42.5	53	3	0.670
KB-W M36	61797	M36	94	50	56	5	0.950
KB-W M42	61798	M42	103	56	65	5	1.230
KB-W M48	61799	M48	115	67	74	5	2.030

CONTACT

TERWA is the global supplier for precast and construction solutions with multiple offices around the world. With all our staff, partners and agents, we are happy to provide all construction and precast companies who work in the building industry with full service and 100% support.

TERWA CONSTRUCTION GROUP**Terwa Construction Netherlands (HQ)**

Global Sales & Distribution
Kamerlingh Onneslaan 1-3
3401 MZ IJsselstein
The Netherlands
T +31-(0)30 699 13 29
F +31-(0)30 220 10 77
E info@terwa.com

Terwa Construction Central East Europe

Sales & Distribution
Strada Sânzieni
507075 Ghimbav
Romania
T +40 372 611 576
E info@terwa.com

Terwa Construction Poland

Sales & Distribution
Ul. Cicha 5 lok. 4
00-353 Warszawa
Poland
E info@terwa.com

Terwa Construction India & Middle East

Sales & Distribution
India
T +91 89 687 000 41
E info@terwa.com

Terwa Construction China

Sales & distribution
5F 504, No. 101 Chuanchang road
PRC, 200032, Shanghai
China
E info@terwa.com

ALL SPECIFICATIONS CAN BE CHANGED WITHOUT PREVIOUS NOTICE.

DISCLAIMER

Terwa B.V. is not liable for deviations due to wear of the products it has delivered. Neither is Terwa B.V. liable for damage due to inaccurate and/or improper handling and use of the products it has delivered and/or use of same for purposes other than those intended.

Terwa B.V.'s responsibility is furthermore limited in accordance with article 13 of the "Metaalunie" conditions, which are applicable for all Terwa B.V. deliveries. The user is responsible for ensuring compliance with all applicable copyright laws. Without limiting the rights under copyright, no part of this documentation may be reproduced, stored in or introduced into a retrieval system, or transmitted in any form or by any means (electronic, mechanical, photocopying, recording, or otherwise), or for any purpose, without the express written permission of Terwa B.V.